

NAQCC NEWS

ISSUE 225 MARCH 2017



KEY CLICKS

- **SPECIAL SPRINT AND PRIZE DRAWING COMING IN APRIL.** Our sprint on April 11th (12th UTC) will be our 150th regular monthly sprint and we want to celebrate with a special prize drawing. We have had more than 150 people participate in most of our sprints but only twice have we had more than 150 logs submitted. So we are setting that as our goal. If at least 150 logs are submitted we will hold a drawing for a prize with an appropriate value of \$150. You certainly don't need to be a seasoned contester or even a competitive type of person to participate. If you can send and receive even slow CW at QRP levels you can join in on the fun. Complete details can be seen on the *Sprints* page in this issue.
- **A NEW AWARD TO WORK FOR.** We have an extensive awards program and today we are announcing the start of a brand new award - the *New Member Ambassador Award*. See the article in this issue about the award.
- **NEW ILLOWA CHAPTER CONTACT PERSON.** Mark, K0NIA, is taking over as the contact person for our local NAQCC Illowa Chapter from Peter, NN9K. We thank Peter for the great work that he did in that role and look forward to seeing the reports from Mark on their chapter activities. We currently have 8 local chapters but would welcome more. Information about our local chapters can be found at http://www.naqcc.info/local_chapters.html.
- **PLEASE USE OUR SPOTTER PAGE.** A member recently asked me to remind everyone that we have a spotter page available where you can post your QRP/CW operations. It gets a lot of use during our NAQCC Anniversary celebrations in October but not very much during the rest of the year. The more that members spot themselves on it, the more that other members will look at it, and the more QSOs will result. This could be especially useful for people who are pursuing our *Friendship Club Award* or our new *New Member Ambassador Award*. You can see posted spots at http://www.naqcc.info/spot_schedule.php and post your own spots at <http://www.naqcc.info/spots.html>.
- **CHECK OUT OUR MONTHLY POLLS.** Jerry, VE6CPP, puts up an interesting poll on our club website each month. You can cast your vote in the current one and see past poll results using the links on the main club page <http://www.naqcc.info/>. The more people that cast a vote, the more interesting the results.

IN THIS ISSUE

<i>Key Clicks</i>	1
<i>Ambassador Award</i>	3
<i>LNR FX4A Review</i>	5
<i>One of Those Days!</i>	7
<i>Member Spotlight</i>	11
<i>Sprints</i>	13
<i>Challenges</i>	16
<i>Awards</i>	18
<i>CW Nets</i>	19
<i>Ham Quips</i>	25
<i>Chapter News</i>	26
<i>Member Submissions</i>	45
<i>About The NAQCC</i>	50
<i>Contact Us</i>	51

- **THANK YOU FOR THE DONATIONS!** A big “THANK YOU” goes out to everyone who has made a recent donation to the NAQCC treasury. The NAQCC has no membership dues and we depend on your generous donations to cover our operating expenses. If others would like to help out with a donation there are two ways that you can do it. The first way is to use *PayPal* to electronically send your contribution to Club Vice President John, N8ZYA, using the email found on the last page of this newsletter. To avoid any additional fees please be sure to check the box that says “*I’m sending money to family or friends.*” Also please add a note indicating that this is a donation to the NAQCC and include your call sign. The second way to make a donation is to mail a check or money order made out to *The North American QRP CW Club* and send it to *John Smithson, 1529 Virginia St E, Charleston, WV 25311*. Assuming that we have your correct email address on file, your contribution will be acknowledged by email with a carbon copy sent to a second club officer as a “check and balance.”



NEW AMBASSADOR AWARD

As most of you probably know, the NAQCC has an extensive list of awards that our members can work on to earn some nice looking “wallpaper” along with a listing on our website at http://www.naqcc.info/awards_winners.html. A complete list of the awards that we currently have available can be seen at http://www.naqcc.info/awards_current.html.

Today we are announcing the creation of a brand new award called the “*New Member Ambassador Award*.” The goal of this award is to work as many new NAQCC members as possible during a given year.



The rationale behind the Ambassador award is something that we can all probably relate to. Have you ever been “the new guy” somewhere? Perhaps it was the first time that you walked into your local ham club meeting. Or what about the first day at your new job? It can be a little bit uncomfortable unless someone comes forward to make you feel welcome. And that’s exactly what we want to do with this new award. We want to make our newer members not only feel welcome but actually wanted.

The basic award can be earned by completing 25 QRP/CW QSOs with different members who have joined the NAQCC during the current year. *For 2017 you need to work people with membership numbers greater than 8756.* The new member on the other end of your QSO does not need to be QRP but we hope that they will be. Rag chews are encouraged but contest QSOs are also acceptable. And there is no requirement to actually exchange membership numbers, although again that is encouraged. (Tools for looking up membership numbers can be found on our club website at <http://www.naqcc.info/memberlist.php> and http://www.naqcc.info/memberlist_complete.php.) Although it is not an official part of the award we also encourage everyone to send an email or QSL card to the new members that you work as a “welcome to the club” and a “thank you” for the QSO.

After earning the basic award, endorsements are available for working 50, 75, and 100 new members

during the calendar year. Updated certificates can be requested with each endorsement. When 2018 rolls around we will start it all over.

So new members, get ready! The gauntlet has now been thrown down and your popularity has just gone up. Who will be the first to earn our *New Member Ambassador Award*?

Complete details on this award, including record keeping requirements and submission information can be seen at http://www.naqcc.info/awards_ambassador.html.



LNR FX4A REVIEW

BY TOM, VE4AKI



I have been involved in QRP activities for over 20 years using a variety of QRP rigs including a Ten Tec PM3, a Heathkit HW8, a SW20 as well as various QRO rigs at the 5 watt level. I recently indulged in the purchase of a LNR FX4A and would like to relate my experience with this marvel of modern technology.

The FX4A is a very small [4.1"x 2.8"x 1.5"] cw/ssb transceiver that covers the 40M, 30M, 20M and 17M bands. Other features include a built in keyer adjustable from 5-50 wpm, a digital display, adjustable sidetone, 40 memories, 2 VFO's and RIT. A supply voltage of 12-13.8 volts is required at an acceptably low power draw [250 ma./ 1200 ma.] The receive sensitivity is quite good at .3 uv. Output power is at least 5 watts on all bands but is not adjustable.

The display is a good size [1.5"x 1"] and displays most of the information needed during operation such as the operating frequency, relative power output, signal strength, relative swr, vfo a/b or memory, mode, and power supply voltage.

External connections are on the sides and include: power jack, BNC antenna jack, headphone jack, key jack for paddles or straight key, and a microphone jack. A compact speaker mic is included. The FX4A does not have an internal speaker. The rig is packaged in a rugged metal enclosure that should be very durable.

Some initial setup is required before use. This is done by accessing the menu. These initial settings include: key type [paddles or straight key], sidetone frequency and volume, cw delay, paddle reverse, and your call sign. Why enter your call sign? The FX4A's keyer can send automatic CQ's at the push of a button!

Speaking of buttons this rig uses a membrane type panel for pushbuttons. These require a fairly firm push so accidental changes should not be a problem. Many of the buttons also have dual purpose, a single quick push or a push/hold to access different functions.

The FX4A internal filter provides selectivity of 2.6 KHz. non adjustable for SSB. For cw use additional filtering is handled by the included Hi-Per Mite external filter, an active filter with a bandwidth of 200 Hz. This covers the basic features and setup of the FX4A, so how does it play?

After initial setup and time spent getting used to the various settings I put it " on the air". I quickly ran into my one and only problem not the fault of the FX4A. The currently used antenna is a multiband, end fed inverted "L" fed with a homebrew tuner. The feedpoint of the inverted "L" starts about 4 feet from the operating table. As is well known end fed antennas can have problems with "rf in the shack". This resulted in some erratic operation of the keyer and distortion on SSB. A coax choke on the feedline from tuner to rig solved the problem.

Once that problem was sorted out I found the FX4A a pleasure to use. The quality of the signal is good according to reports I have received both on cw and ssb. Microphone gain is fixed but seems satisfactory. Three different tuning rates are available for fine tuning or rapid changes in frequency. The VFO knob has a good feel, not too loose or tight.

The external cw filter has a very narrow bandwidth somewhat narrower than I am used to. I have been using an external DSP filter with adjustable bandwidth and this seems to work well for me. Sensitivity is more than adequate. Numerous weak stations such as SOTA, NPOTA and dx have been worked with minimal difficulty. The only shortcoming I have found is the lack of a noise blanker. I live in a residential neighborhood and RFI is not uncommon.

The main reason for purchasing the FX4A was for portable operation and my experience so far indicates it will be ideal for that use. I plan on adding a 5-7 Ahr. battery to my go-kit for portable operation.

If you are considering the purchase of a QRP rig for home use or portable the LNR FX4A is worth consideration. It is a small but capable rig ideal for portable, backpacking or home use. LNR has other small QRP rigs in their line-up with similar features also worth consideration.

73— — — — Tom VE4AKI



ONE OF THOSE DAYS! BY PAUL, N8XMS

Have you ever had “one of those days?” A day where one thing after another seems to go wrong and no matter what you do, things just keep going wrong? February 21st was that kind of a day for me - a “comedy of errors” where most (but not all) of the errors were made by me.

I’m not really much of a ham radio contester and the only one that I regularly participate in is our monthly NAQCC sprints. As a matter of fact I had played in 107 sprints up through January and had a streak of never missing a month that dates back to October 2008. That unbroken streak has almost become an obsession so even when I’m not feeling well, or I have some kind of schedule conflict, I try to get on the air and make at least a few QSOs to keep it going.

But even as I admit to this “obsession” I still claim to be a fairly well balanced individual. (Of course a lot of people in the psych wards probably claim the same thing!) I have a good priority list, and family is certainly on the high end of that list, so it looked like the streak was going to end when my wife and I agreed to babysit our granddaughter on the evening of the February sprint. Since it was a school night we would need to take care of her at her house so that she could get to bed on time, and that meant that I wouldn’t be able to sneak off to the shack for a few sprint QSOs. OK, so that was a little disappointing but so be it. Reagan is a very special little 6-year old and a real blessing in our lives.



Then something strange happened - some very freaky weather - a week in the mid to upper 60’s. (In Michigan in February!) And my wife suggested that I might be able to operate portable from our son’s yard during the sprint. That was a great idea! So I got out my “Shack-in-a-box” and put my battery on the charger.

My portable gear consists of an Elecraft KX1, small external SLA battery, Palm portable paddle, and earbuds. My usual portable antenna is made from very thin steel bead-wire, about 40-feet long, attached to a length of fishing line with a weight on the end. I usually use a slingshot to launch the line into a tree, lay out a counterpoise on the ground, and get on the air in just a few minutes. (Details on this antenna can be seen at http://wa3wsj.homestead.com/WA3WSJ_Bead-Wire_Antenna.pdf.)



But there was a problem. Our son lives in an older urban neighborhood with small houses on tiny lots and virtually no yards. I wasn't sure that I would be able to find a tree that would work for supporting my antenna. So I went into my closet and dug out an old self-supporting portable vertical antenna that I had made many years ago, to take as a second option.

When we got to our son's house I surveyed the yard and found that there really wasn't a tree that would work for my wire antenna. But there was a very nice tall tree about 4 feet in front of his neighbor's house and just across the driveway from my son's front yard. If I didn't park in the driveway, and stood on his front porch steps, I would have an "easy" shot up into that tree without any windows or other concerns in the flight path. The neighbor wasn't home and I felt a little bit uncomfortable about using the tree but it would be a quick deployment, brief operating time, and a fast take down. No one would be any the wiser.

I waited until closer to dark to deploy my antenna and Reagan came out to "help". She especially liked the red fishing weight - "it's so pretty!" We laid out the antenna and fishing line in front of us on the ground, tucked the transmitter end of the antenna, with the banana plug on it, into my pants pocket and loaded the fishing weight into my slingshot. I aimed, fired, and . . . oops, the line tangled up a little bit and fell short of the limb that I was aiming for. No big deal, I've had that happen before. (I once had a fishing weight fly back at me so hard that I had to duck to keep from getting brained!)

So I prepared for a second shot. This time it was a beautiful launch but the fishing weight had so much momentum that it jerked the end of the wire out of my pocket and the entire antenna flew up into the tree! Both ends finished about 20-feet above the ground and were completely unreachable. And it wasn't coming down . . . so scratch one portable wire antenna and an important lesson learned!



I was definitely bummed out about the situation and Reagan was disappointed as well. But we had a "Family Fun Night" activity to go to at her local public library and soon the pizza, craft activity, and other kids, helped us put the antenna fiasco behind us.

It was dark when we got back from the library but with the help of the porch light and a flashlight it would still be possible to put up the other antenna that I brought. I got it out of the trunk of my car and started to put it together. Then I discovered that something was missing from its carry bag - the most important part, a 12-foot collapsible whip. Without that whip the antenna would just be a 5-foot copper pipe with a loading coil on the top of it! I would like to say that my "can-do ham ingenuity" figured out a solution to this problem using duct tape and aluminum foil, or something like that, but that would be a lie. I put everything back in the car and went inside and played a round of Old Maid with Reagan. Then we got her tucked into bed, the sprint started up, and I settled down to read a book. (Big bumper sigh here!)

But the story is not over. In the back of my mind I thought that there was still a very small chance that I could at least get a participation point for the sprint. Our son was supposed to get home about 10:00 PM, 0300 UTC. It's about a half-hour drive to my home so if he came home a little early, and if I could drive "efficiently," I just might be able to make it home for the very end of the sprint. The route is mostly freeway with a couple of surface streets and traffic lights on each end of it. I would need some cooperation from those traffic lights too!

Our son did get home a few minutes early and at about 0255 UTC we were in the car and heading home. Here in the Detroit area most of our freeway speed limits are more or less considered to be "speed suggestions," and traffic was light, so I was able to "push it" a little. As we got off the freeway at our home exit I was estimating that I would have about 8 minutes available to make a QSO. That should work . . . then I had to stop for a red light.

Actually, the red light wasn't the problem. It was the person in front of me who stopped his car completely past the limit line for the intersection. And of course, at that very moment there was a police officer on the cross street who decided that he needed to look into this situation! He flipped on his lights and pulled his squad car into a position that blocked the offender . . . and me! AARGH!!!! I didn't think that it would be a good idea to honk my horn at the officer so I just sat there and kept glancing at the clock on my dash. Fortunately the officer apparently decided to just give the person a verbal warning and we were able to proceed home after just a short delay.



So I dashed into the house with the clock showing 10:24 PM, 0324 UTC, and headed directly to the shack. I turned on the radio, cranked up the power to 5-watts (I've been working QRPp all month), and switched it to 80-meters. I don't have an antenna for 80 but I knew that in recent sprints most of the action during the final hour is on that band so I figured that it was just about my only chance.

I found K9FO working someone. He wasn't real loud but I was running out of options so I got ready to tail-end his QSO. Just as I started to send my call a much louder station also called him and K9FO came back to that person. Nuts! (I think the other person's call ended in ESE, possibly N2ESE, but I'm not sure of that.) I wasn't surprised that he went to the other guy because, as I said, I don't really have an antenna for 80-meters. My rig's tuner claims a perfect 1:1 SWR into my old Cushcraft R7 vertical so I figure that it is much closer to being a good dummy load than an antenna on that band. The ERP out of it is probably in the low milliwatts!

OK, keep calm, I can still do this! I quickly flipped to 40-meters on the off chance that someone would

still be there. Nada. Then I flipped back to 80 where K9FO and "ESE" were finishing up. K9FO then called CQ and I answered . . . but he didn't hear me! He called CQ again. Which I answered again, with the same negative result.

I wasn't even taking the time to look at the clock but I new that there wasn't much time left. I tuned up the band a couple of KHz and heard WB9HFK finishing a QSO with someone. He had a good signal and I tail-ended him with my call . . . and EUREKA! He came back to me! We exchanged the required information and as I signed with him my clock was showing 0329. I'm sure that his final "73" was actually at 0330!

Wow! I started breathing again. I got my participation point and continued my streak but I sure hope that I never have to do something like this again! Yes, my wire antenna is still up in that tree. Probably no one will ever notice it but I know it's there and every time we go over to our son's house I'll check to see if some squirrel or the wind has done something to bring it down. After all, the banana plug and fishing weight are probably worth a whole 75-cents and that doesn't even count the value of the wire. (\$5.99 for a 300-ft roll at Walmart. Did I mention that I'm cheap frugal?) At least I did find the missing whip in my closet for that other antenna.

There is actually a crazy postscript to this story. You would think that logging a single contact into the sprint autologger would not be a problem. Wrong! I forgot to include the multiplier count in my log (can I count to 1?) and ended up having to fix that and submit it a second time! Sorry Andy and John (our log processors) - **it was just one of those days!**



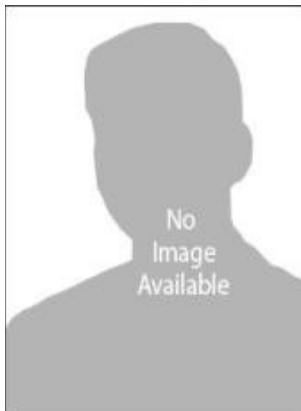
MEMBER SPOTLIGHT



Each month one of our members is randomly selected and asked to share their ham radio biography with all of us. Questions or comments should go to Paul, KD2MX.

DISCLAIMER: Any views expressed in this section are those of the submitting member and may or may not be those of the NAQCC or its officers.

RANDY DAY, KF5RZG, #8536



Since taking my first electronics class in high school, and listening to my first international short-wave radio broadcast, I had always wanted to obtain my amateur radio license. I am somewhat of a newer ham, having received my General License in 2012, even though I was in the U.S. Army Signal Corps for over 20 years. I retired from the U.S. Army Signal Corps in 2013, and I can now honestly say that I've learned more about radio communications since receiving my license than I did during my whole time in the Army.

Amateur radio allows me to continue what I enjoyed in the Army, which is working with radio communications and teaching younger (and sometimes older) hams what I have learned. Upon receiving my General license, I decided to focus almost exclusively on digital modes such as PSK-31 and JT-65. I am by nature a reserved and somewhat shy person, and am not one to "rag chew" on the phone bands (only about 10% of my log contacts are phone), so after gaining a solid understating of digital modes, the next mode I wanted to branch into was of course CW.

I am defiantly a "Card Carrying" member of the digital and computer age, and when I started out learning CW, any free time I had would find me using one of the many applications or web sites that teach CW. The more I learned, the more determined I was to become proficient at it.

Although I enjoy new technology, I had a nostalgia for the "Old Timers" and the way they could bang out those dots and dashes with nothing but a straight key. I currently only use a straight key when I operate CW, although I have nothing against others who use other devices to get their messages though. There is just something satisfying to me in "pounding out" my QSO with a straight key.

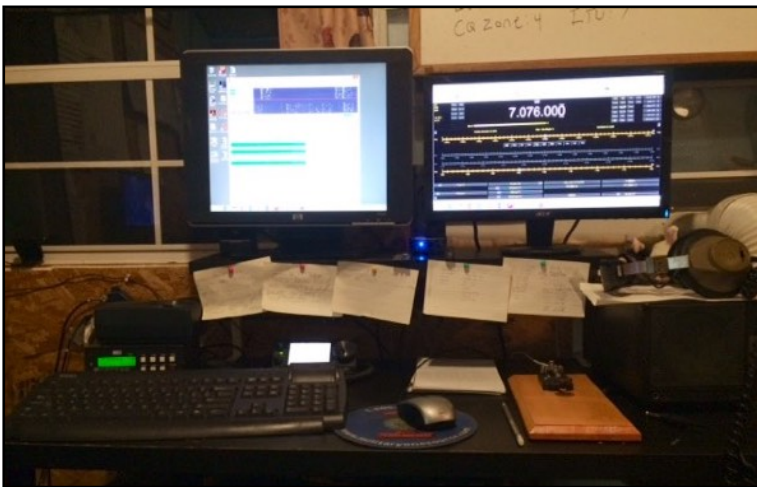
I fell into QRP quite by accident. I was searching the web for nets that were designed to help CW newcomers, and found an NAQCC CW net. I had no idea at the time that NAQCC was not only "newbee" friendly, but also a QRP net. I had never worked, or considered working, QRP before, but the

NAQCC is such a great club that I thought I would give it a go. Before I started using QRP, if you would have tried to tell me all the contacts that could be made with 5 watts and a piece of wire, I would have said you were crazy. Now I am a believer.

I have since purchased a portable QRP rig. The great thing about being in the Army Signal Corps for so long is that you learn how many different antenna configurations you can create with just some feed line, wire, and 550 parachute cord. I am looking forward to getting out of the shack and operating portable QRP.

I currently use an ICOM IC 7100, which is fully integrated into my computer system, a Straight Key, and Ham Radio Deluxe as my computer interface. All of my antennas are homemade, and since I retired and stayed close to Fort Polk, Louisiana, there is a wealth of surplus military equipment available. So not only are my antennas "homebrew" but most of my antenna supports are home made as well. As one fellow Ham described my set up, it looks like a permanent field day at my house. I am also lucky enough to have a finished shed in my back yard that I use for amateur radio, so I operate out of a true "Ham Shack".

Here are some pictures of my modest, yet functional, radio set up.



NAQCC SPRINTS

CURRENT MONTH'S SPRINT: Our sprint this month will be on March 16, 0030-0230 UTC. That's the evening of Wednesday the 15th here in North America. Please note the change of time due to the start of Daylight Saving Time. In locations that go on DST the sprint will start at the same local time as always. Complete details on the sprint can be found at <http://www.naqcc.info/sprint/sprint201703.html>.

Please remember to strive for that perfectly formatted "SILVER LOG" submission. It really helps our log processing. Everything that you need to know about how to have a Silver Log can be found at <http://naqcc.info/GLCheckList.txt>.

Complete sprint rules and information on log submissions can be found at <http://naqcc.info/contests.html>.

We occasionally get questions from sprint participants about how to use the GenLog software to log and report their contacts. Most of the time the answers to these questions can be found in the excellent illustrated tutorial written by KB8FE and found at http://www.naqcc.info/sprint_genlog_tutorial.html. Alternatively, a logging spreadsheet for Mac OS X computer users is available at http://www.naqcc.info/sprint_macs.html.

LAST MONTH'S SPRINT RESULTS: My personal sprint story is told elsewhere in this newsletter and I think that you will enjoy it. Participation was down this month, possibly due to the Valentines Day date change that we did and then also a partial conflict with an SKCC contest. For a while it looked like we weren't going to break the 100-log mark but we did finally end up with 101 submitted logs. Band conditions varied widely from one location to another but everyone seemed to have a great time.

Complete sprint results, including soapbox comments, can be seen at <http://www.naqcc.info/sprint/sprint201702.html> and summary information can be seen in the tables on the following pages.

We would especially like to welcome our first-time log reporters. We hope that you had a great time and will return often: WW7Y N2WK

SPECIAL CELEBRATION FOR OUR 150TH REGULAR SPRINT: As mentioned in *Key Clicks*, our sprint April 12, 0030-0230 UTC, will be our 150th regular monthly sprint and we are going to celebrate with a special prize drawing. Our first sprint was held in October 2004. We didn't have a sprint the following month but starting in December of that year they became a regular and popular monthly event. Since April of 2010 we have had over 150 participants almost every month, but only twice - in February and October of 2013 - have we had more than 150 logs submitted. We would like to see that change and our goal is to have at least 150 submitted logs for our 150th monthly sprint. If we do reach that submission level everyone who has sent in their log will be automatically entered into a drawing for a prize valued at \$150. Detailed information about operating in our sprints and submitting your log can be seen in a pair of articles that appeared in the July and August 2016 newsletters and that can be found at http://www.naqcc.info/newsletter_archive.html. A great deal of information can also be found on our website at http://www.naqcc.info/sprint_rules.html and http://www.naqcc.info/sprint_tips.html. Please help make this special celebration work by participating in the sprint and submitting your log next month.

SWA STRAIGHT KEY CATEGORY			
Division	1st	2nd	3rd
W1	N2CN	KN1H	
W2	W2SH	AA2VG	
W3	KD3CA	KQ3Z	
W4	K4KRW	WB4OMM	WG8Y
W5	N5GW		
W6	K6MGO		
W7	KC7DM		
W8	WV8DH	WB8LZG	
W9	WB9HFK	W9CC	
W0	AA0W		
VE	VE3IDS		
DX			

SWA BUG CATEGORY			
Division	1st	2nd	3rd
W1	K1SX		
W2			
W3	K3WWP		
W4	AK4NY		
W5	W5ODS		
W6			
W7	N7QR		
W8			
W9	N9SE		
W0	KD0V		
VE			
DX			

SWA KEYER/KEYBOARD CATEGORY			
Division	1st	2nd	3rd
W1	KB1M		
W2	K2ZD		
W3	KC3RN		
W4	K2YGM	N4MJ	
W5	K5MBA		
W6			
W7	WW7Y		
W8	N8NK		
W9	NN9K	K9CW	
W0	N0TA		
VE	VE7YU		
DX			

GAIN CATEGORY			
KEY==>	SK	BUG	K/K
			N2WK

FIRST TIME ENTRANT HIGH SCORE			
KEY==>	SK	BUG	K/K
	see web page	see web page	see web page
PRIZE DRAWING WINNER			
KA2KGP			

	Current Month	Previous Month	All-Time Record	Record Date
Logs	101	111	194	2/13
Participants	143	155	269	2/13
Total QSOs	1406	1345	2804	2/13
Hour 1 QSOs	779	780	1468	2/13
Hour 2 QSOs	627	565	1334	2/13
20m QSOs	0	0	1232	8/13
40m QSOs	663	513	1534	4/12
80m QSOs	743	832	1417	2/13
Avg QSOs/Station	13.9	12.1	19.3	9/11

SPRINT HONOR ROLL: We honor the following members for their outstanding participation over the years in our regular sprints. Exact counts can be seen at http://naqcc.info/sprint_dates.html.

NUMBER OF SPRINTS	MEMBERS
50+	K4ORD K9EYT KB0ETU K9OSC KA9FQG K6MGO NA4O N8BB WG8Y AA7CU KC2EGL VE5BCS N2ESE K6CSL N8QY WA8SAN N0TA WX4RM WD0K K4KRW NQ2W KB8FE NO2D WY3H AA9L KQ1P KE5YUM NU7T
75+	W4DUK WB8ENE WA2JSG VE3FUJ K1IEE N4FI KD0V K3RLL NF8M KU4A K4JPN K4NVJ KB3AAG
100+	KD2MX N8XMS K4BAI WB8LZG W2SH W9CC
125+	W2JEK KA2KGP K3WWP



NAQCC CHALLENGES

CURRENT MONTH'S CHALLENGE: Ahh, chocolate! While there might be a few people out there who don't like chocolate, I personally don't know any of them. But although chocolate is the theme for this month's alphabet challenge, your taste buds will definitely not be tempted! The old saying that "there is a right way, a wrong way, and the army's way" comes to mind but you will need to look at the webpage to learn more. The complete list of words and other details can be found at <http://www.naqcc.info/challenges/challenges201703.html>.

The European challenge for March works with the names of some very famous European women and their birth years. Details at <http://naqcc-eu.org/eu-challenges/march-2017-challenge/>.

NEXT MONTH'S CHALLENGE: The North American challenge in April will also involve sweets but they will be much more mouth watering than this month's chocolate. The complete alphabet challenge details can be found at <http://www.naqcc.info/challenges/challenges201704.html>.

If you ever have fantasies about making a killing in the international currency market you need to check out the April European challenge at <http://naqcc-eu.org/eu-challenges/april-2017-challenge/>.

Complete information about our challenges including a helpful tutorial on how to organize your work for an alphabet challenge can be found at <http://naqcc.info/challenges.html>. Detailed general rules for our challenges can be found at http://naqcc.info/challenges_rules.html.

LAST MONTH'S CHALLENGE: The deadline for submitting entries for the February QRPp challenge is still a few days away so final results are not yet available. You can go to <http://www.naqcc.info/challenges/challenges201702.html> to see the results that have been posted so far, and both N8XMS and K3WWP have additional comments about the challenge in the *Member Submissions* section of this newsletter.

The European challenge results will be available at <http://naqcc-eu.org/eu-challenges/february-2017-challenge/>.

PARTICIPATION ELIGIBILITY: Remember that participating in a combination of sprints and challenges will make you eligible for the top-tier prizes in our anniversary drawing in October. So start working on it now. Eligibility details at http://www.naqcc.info/prize_drawing_12th_anniv.html.

CHALLENGE HONOR ROLL: We honor the following members for their outstanding participation over the years in our monthly challenges. Exact counts can be seen at http://www.naqcc.info/challenges_schedule.html.

NUMBER OF CHALLENGES	MEMBERS
25+	N1JI PA0XAW KD2MX N1LU KD0V K9OSC VE3HUR KU4A WY3H
50+	K1YAN VE3FUJ NU7T
75+	K1IEE
100+	N8XMS W2JEK
125+	K3WWP



NAQCC AWARDS

We have an extensive list of awards that you can earn. Complete details can be found at <http://naqcc.info/awards.html>.

FEATURED AWARD: 30-30 AWARD

Our 30-30 award is designed to promote the possibly underused 30-meter band. To qualify for this award you need to make 30 QRP/CW 30-meter QSOs during a single calendar month. You can find complete details about this award at http://www.naqcc.info/awards_magnum.html.

RECENTLY ISSUED AWARDS:

2016 Participation Award Corrections

A mistake was made in a callsign listing on both the website and in the newsletter. Mike, WI5H, was the winner of the Participation Award in the 5th district for both 2015 and 2016. We apologize to Mike for this mistake.

A technical glitch prevented us from receiving the December 2016 challenge submission from Tonnie, PA9CW. Fixing that glitch resulted in Tonnie becoming tied for first place with PA0XAW for the 2016 Participation Award in the DX category. A certificate has been issued to PA9CW for his first place finish.

Friendship Club Award

1900 point endorsement

0016 - N8XMS 943 02/21/17

2800 point endorsement

0001 - K3WWP 1377 02/11/17

1000 MPW Award

0530	KB1M	R11AND	-	1,769	02/26/17	Inverted V @30'
0529	N8XMS	D4C	-	19,190	02/19/17	Cushcraft R-7 trap vertical

DXCC Award - Basic

0021 - KJ4R 02/19/17 Homebrew multi-band vertical

WAVE Award by K1YAN

Northwest Territories endorsement

0001 - K3WWP 02/12/17

Nunavut endorsement

0001 - K3WWP 02/12/17

20-meter Band endorsement

0001 - K3WWP 02/12/17



NAQCC QRS/QRQ NETS

We have a number of nets (QRS = slow speed, QRQ = higher speed) designed to help people build up their CW operating skills. Complete information about these nets can be found at http://naqcc.info/cw_nets.html. Questions should be directed to Net Manager Wayne, NQ0RP.

NAQCC NET SCHEDULE

Net	Local Time	UTC	Freq +/-	Primary NCS
Farnsword 40/80 m QRQ Nets (FRN)	Sunday 4:00/6:00 PM PT	Monday 0000/0200 Z	7056/3556 KHz	Rick, N6IET (in CA)
East Texas QRS Net (ETN)	Monday 7 PM CT	Tuesday 0100 Z	3564 KHz	Allen, KA5TJS (in TX)
Midwest Net QRS Net (MWN)	Monday 7:30 PM CT	Tuesday 0130 Z	3556 KHz	Wayne, NQ0RP (in KS)
Rocky Mtn Regional/Continental QRS Nets (RMRc)	Tues/Thurs 4:00 PM MT	Tues/Thurs 2300 Z	14060 KHz	Dale, WC7S (in WY)
Rocky Mtn Regional/Continental QRS Nets (RMRc)	Tues/Thurs 4:30 PM MT	Tues/Thurs 2330 Z	7062.5 KHz	Dale, WC7S (in WY)
West Virginia QRS Net (WVN)	Wednesday 9 PM ET	Thursday 0200 Z	7117 KHz	John, N8ZYA (in WV)
Pacific Northwest 80 m QRS Net (PNW80)	Thursday 7 PM PT	Friday 0300 Z	3574 KHz	Stewart, KE7LKW (in WA)

Note: On the rare occasions that there is a conflict between one of our scheduled nets and one of our regular sprints the sprint will take precedence.

NET CONTROL STATION REPORTS

NAQCC Farnsword Net (FRN) QRQ 40/80 Meter Nets

Sunday evenings 4:00 PM PST, which is Monday 0000 UTC on 7056 kHz +/-
 Sunday evenings 6:00 PM PST, which is Monday 0200 UTC on 3556 kHz +/-
 Main NCS - Rick N6IET (California); Backup NCS - JB NR5NN (California)

2017-02-06 40m QNI (7) NCS N6IET, K6GVG, KE6EE, KW6G, AI6SL, N6KIX, N7HRK/M

2017-02-06 80m QNI (6) NCS N6IET, N6KIX, W7SAG, KE6EE, K6GVG, KW6G

40-Meter FRN 0000z to 0101z; fxF2 = 6.37 -> 5.93 MHz

I'm now indicating both starting and ending Point Arguello fxF2 data in the sub-band headings. Figures indicate maximum NVIS frequencies for Southern California. (Your mileage may vary.)

The band stayed fairly short for the entire hour. We could all copy each other to some degree throughout the net - from Libby, Montana, near the Canadian border down south to San Diego County. The stations close to each other (less than 100 miles apart) reported weak signals and difficult copy.

We welcomed Roy back after a long absence. Roy has two QTHs, one in Bonsall with nice acreage, a 55-foot tower and an

8-element 10-40m log periodic (and some wire antennas for 80 meters), and one in Newport Beach at which he uses a balcony rail-mounted mini-hamstick of some kind. Last evening he checked in from his Bonsall QTH with a great signal (except for me - he was a bit too close).

Wolf AI6SL also returned and is becoming a regular from Sunnyvale. He's been having a little problem with his FT-991's output power (and signal strength) fluctuating wildly at first for some unknown reason. (He has low SWR, so that's not it. RFI?) I hope he solves the riddle.

Rob N6KIX and I have been QSOing regularly on 80 meters in the mornings, and I talked him into joining us on both bands this evening interspersed with his family's dinner.

Polar Bear Rick (PBR) N7HRK/M reported 28 inches of snow since Saturday with 30 more inches expected today (Monday) and tomorrow. Wow! So he missed his weekly Sunday icy swim, but he said that swimming in deep snow drifts is almost as enjoyable.

The guys in the SF Bay area were expecting buckets of rain today.

80-Meter FRN 0200z to 0310z; fxF2 = 4.65 -> 4.33 MHz

We had NVIS conditions here down South for the entire net. At first, I could even hear my own signal bouncing back from the F2 layer in between my code elements (my TS-590sg has really fast QSK). So all the close stations could hear each other very well, yet nobody had trouble copying John in Idaho or Roy near San Diego. Roy was banging in here at 20dB/S9.

By this time the SF Bay area stations were reporting waves of heavy rain and howling wind.

Charles KW6G was using his new IC-7300 on both bands. It sounded great! He said he enjoyed using his Drake 2-line the other day for the first time in nine months.

John in Idaho said they were having balmy weather with melting snow causing lots of puddles and potential flooding.

Ray and I both have older IC-761s and we had a short discussion praising its merits. We compared notes on using external DSP noise-cancelling speakers with older rigs. He likes his SGC ADSP. My West Mountain Radio CLRspkr, not so much. (Weak signals disappear, and it causes delayed side tones when I'm sending, which I find really disconcerting.)

I'm entirely too long-winded, and I apologize. :-)

2017-02-13 40m QNI (8) NCS N6IET, N6KIX, N7HRK/M, KE6EE, KW6G, W7SAG, K6GVG, K7KY

2017-02-13 80m QNI (4) NCS N6IET, N6KIX, KE6EE

2017-02-13 160M QNI (4) NCS N6IET, KE633, N6KIX, K6GVG

Note that we met on all three low bands this evening for the very first time!

An important topic this evening was the impending Oroville Dam emergency spillway failure. Rob N6KIX in Davis was preparing to activate an ARES net in case of an emergency.

40-Meter FRN 0000z till 0111z; fxF2 = 6.43 -> 5.55 MHz

We had great attendance and participation on 40m this evening! The band was gradually going long from the beginning, and closer stations started losing copy on each other before we closed the net. PBR (Libby, Montana) and John (Eagle, Idaho) heard each others very strong signals, at first, for a change, and Roy and the SF Bay area stations were quite strong here in Los Angeles.

80-Meter FRN 0200z till 0240z; fxF2 = 4.40 -> 3.40 MHz

Rob updated us on the impending Oroville spillway failure. He lives downstream from it, but not near a flood plain and so will remain high and dry.

As you can see, 80 meters also started going long halfway into the net. I was the only station having trouble copying Roy in San Diego County toward the end as we lost NVIS.

160-Meter FRN 0300z till 0317z; fxF2 = 3.35 -> 3.18 MHz

This was an ad hoc experiment for those interested in getting on 160 meters (as several of us are). I do not yet have an antenna for 160m, but I discovered that my TS-590sg's ATU will tune the CW band just fine on my Hy-Gain AV-680 vertical despite that the SWR is very high. The fan in my rig's PA/ATU section came on for the first time since I've owned it, and I suspect most of my power was just heating the ATU components. Oddly, my antenna analyzer says my vertical has a flat SWR at about 1700 kHz.

Mike gave me a 439 (he was 459 here), Rob gave me a 439 (he was 349 here), and Roy gave me a 269 (he was 589 here). Mike said his rig was reporting "High current". So at least three of us have work to do on our 160-meter antennas.

72/73 de Rick N6IET

2017-02-20 40m QNI (8) NCS N6IET, NR5NN, N6KIX, KE6EE, KW6G, W7SAG, AI6SL, K7KY

2017-02-20 80m QNI (7) NCS N6IET, NR5NN, KE6EE, N6KIX, W7SAG, K7KY, K6GVG

2017-02-20 160m QNI (4) NCS N6IET, NR5NN, K7KY, K6GVG

I'm proud to say that our net times and bands appear to be nearly optimum for current solar conditions. And we had great participation and great fun this evening!

40-Meter FRN 0000z till 0101z; fxF02 = 6.75 -> 6.00 MHz

Not quite NVIS, and the SF Bay area stations could barely copy each other. Everybody except Polar Bear Rick and Doug was RST 589 to 599 here in Los Angeles. Doug and PBR were about 469. PBR and John had a pipeline to each other (MT to ID).

JB, Charles, and John said they participated in the DX CW contest last week, which ended right at the start time of this net.

Rob had installed Windows 7 on his laptop and was busy downloading and installing 208 updates. He gave us a count during each net. :-)

Polar Bear Rick (PBR) said it was too muddy today to do his weekly icy swim.

80-Meter FRN 0200z till 0301z; fxF02 = 5.18 -> 3.95 MHz

Good NVIS conditions. Except for John everybody was 589 to 599 here. Roy was 20dB/S9 here.

JB was struggling with his new built-in KX3 paddles (dual/iambic - not his favorite). He did pretty well.

Mike was using his Begali bug and Roy was using his Begali paddles. I'm hoping to receive my new Vibroplex Blue Racer in the mail this week. Rob was using his Lightning bug, for which I think he said he originally paid \$10.

Roy mentioned during his last transmission that he had just erected two new (not very high) 160-meter antennas on his Bonsall property - a dipole and an end-fed sloper (I think). My 160/80/40/30m trap dipole is still on hold.

160-Meter FRN 0400z till 0417z; fxF02 = 3.58 -> 3.53 MHz

We had NVIS, but signals were disappointingly weak except from Roy. Roy was 469 at first, and when he signed out he was 599 here and 579 in the Bay area (I suspect he had switched on an amp). I don't know which antenna Roy was using or how much power.

Doug in SE Oregon was the second strongest at 469 running 75 watts.

JB was weak at first but got a little bit stronger on his second transmission. (He temporarily switched from 20 watts to 100 watts.) He had suffered a utility power failure and was operating on his van's battery power.

Nobody gave me a good signal report. :(There was a bit of QSB.

Except for Roy, I don't think any of us regards our 160-meter antenna to be ideal.

72/73 and to all a good night!

de Rick N6IET

2017-02-27 40m QNI (8) NCS N6IET, K6GVG, KE6EE, KW6G, NR5NN, AI6SL, N7HRK/M, W7SAG
 2017-02-27 80m QNI (3) NCS N6IET, K6GVG, W7SAG
 2017-02-27 160m QNI (2) NCS N6IET, Co-NCS NR5NN

We had good NVIS propagation at the start of each net, this evening, as indicated by the fxF2 indices below. Conditions were quite good! Everybody could hear each other during the first half of each net on each band.

40-meter FRN 0000z till 0114z; fxF2 = 7.2 -> 6.38 MHz

Roy K6GVG was at his Newport Beach QTH, where he was using a mini-HamStick antenna mounted to his 8th-floor balcony wall overlooking the beach. He had a surprisingly strong signal until the very end, at which point he dropped into the noise at my QTH. PBR and John stopped hearing each other during our third round. Until then everybody was at least 589 here in Los Angeles except Polar Bear Rick who was peaking at 579 all the way from Libby MT with a mobile whip on his parked Buick. John's signal came up to 599 all the way from the Idaho panhandle with his one-story attic dipole.

I alternated between using my new Vibroplex Blue Racer bug to using my Bencher paddles, depending on whether the other station was using a bug. I needed the practice switching back and forth. We QRQed to 23 wpm the last 30 minutes of the net.

80-meter FRN 0200z till 0245z; fxF2 = 5.18 -> 4.10 MHz

I got 30 strong RBN spots all the way to the east coast while calling CQ FRN, but nobody checked in during the first 17 minutes until Roy came on with his mini-HamStick at 20db/S9. Then John checked in with a very weak signal. I had just explained to Roy that John's attic antenna doesn't get out so great on 80 meters. Sure enough, John's signal was only 369 here.

160-meter FRN 0400z till 0406z; fxF2 = 3.4 MHz

Only JB checked in on 160m. We took turns calling the net. He was about 459 here, and he could hardly copy me at all - same as the previous several sessions. So we moved back to 80 meters and completed our QSO just before that band started going long.

72/73 de Rik N6IET

=====

NAQCC East Texas QRS Net (ETN)

Monday evenings 7:00 PM CST, which is Tuesday 0100 UTC, on 3561 kHz +/-
 Main NCS - Allen KA5TJS (Texas)

2/7/2017 QNI(4) NCS KA5TJS KE5YUM KE5YGA WI5H

Terry checked in with a 599 QRP and he had the strongest signal of the night. The band was in good shape towards Central TX. last night.

Andy was 589 and Mike was 579. Good group for sure.

Allen KA5TJS

PS: Saw the email about your change in time and tuned down and could hear you about 569 with QSB last night Wayne. I was going to try a check in but did not hear a call for QNI before you disappeared! Don't know if it was QSB or what. I will check next week and see if we can hook up.

2/14/2017 QNI(3) NCS KA5TJS KE5YGA N9RLO

Ruff night! We had thunder storms moving in from the Dallas area and a lot of QRM. Andy was 599 but the noise was S9. Welcome to John N9RLO (4687). He was 589 and first time I have him in the log.

Allen KA5TJS

2/21/2017 QNI(3) NCS KA5TJS KE5YUM KE5YGA

Terry was using an IC-718 that he just got and was sounding great, 599 all they way.
 Terry was 580/599. We had good band conditions last night.

I called for a QSY to 3.564kc when we started as for the the last few weeks a carrier starts on our frequency the first time I key down. It is not loud but very annoying! I hate to think it is intentional but it did not follow us done freq. thank goodness.

Allen KA5TJS

PS: Finally got into you net Wayne! We finished up about 7:35 and I tuned down and had a pretty good copy on you and some of the other stations. Great to hear you and will keep trying as long as you stay early. I turn into a pumpkin about 8:00pm. I do most of my radio early in the mornings.

2/28/2017 QNI(3) NCS KA5TJS KE5YUM KE5YGA

Band conditions were good last night. Terry (KE5YUM) was 599 and QRP. Andy (KE5YGA) was 599 but sure he was QRO.

Allen KA5TJS

=====

NAQCC MIDWEST QRS Net (MWN)

Monday evenings 7:30 PM CST, which is Tuesday 01:30 UTC, on 3556 kHz +/-
Main NCS - Wayne NQ0RP (Kansas), Deputy NCS Paul - N0NBD (Kansas)

2017-02-07 80m QNI (5) NCS NQ0RP, N0NBD, AA0W, KJ5ZW, WB9HFK
2017-2-14 80m QNI (1) NCS N0NBD
2017-2-21 80m QNI (5) NCS NQ0RP, K4JER, KA5TJS, WB9HFK, AA0W
2017-2-28 80m QNI (5) NCS NQ0RP, KD0DK, WB9HFK, K4JER, KA5TJS

=====

NAQCC Rocky Mountain Regional/Continental QRS Nets (RMRC)

Tuesday/Thursday at 4:00 PM MST, which is Tuesday/Thursday 2300 UTC, on 14060 kHz
Tuesday/Thursday at 4:30 PM MST, which is Tuesday/Thursday 2330 UTC, on 7062.5 kHz.
Main NCS - Dale WC7S (Wyoming)

2-2-2017 QNI (4) NCS WC7S, K0DTJ (2), AA7CU
2-7-2017 QNI (2) NCS WC7S, AA7CU
2-9-2017 QNI (3) NCS WC7S, N6ZI, KA5QQA
2-14-2017 QNI (5) NCS WC7S, WA2DWX (2), AA7CU, K0GMO
2-16-2017 QNI (7) NCS WC7S, VE2MF, K0DTJ(2), AA7CU, KE8EAS, K8THF
2-21-2017 QNI (4) NCS WC7S, WA2DWX, KA7WNS, AA7CU
2-23-2017 QNI (4) NCS WC7S, N6GA, VE2MF, K0DTJ
2-28-2017 QNI (6) NCS WC7S, KE6EE, WA2DWX, AE1N, AA7CU

=====

NAQCC West Virginia QRS NET (WVN)

Wednesday evenings 9:00 EST, which is Thursday 0200 UTC on 7117 kHz.
Main NCS - John N8ZYA (West Virginia)

2-15-2017 QNI (3) N8ZYA NCS W8GDP KA8SYV

Soapbox:

It was an interesting net last night. John W8GDP and I had a nice chat about trying to work the Ivory Coast in Africa. Rarely hearing them sending below 40 wpm, we're both considering buying a MFJ code reader. lol

I could hear and work KA8SYV easily but John, who is only 2 miles from me, couldn't hear a dit or dash. Frank has built a new kit which I'm looking forward to seeing at a club breakfast soon.

Comments:

The net tonight was ran by Tom Gladis AB8RL who lives in the lower portion of the valley. The 40 meter band continues to be very long. He is only 17 miles from me in a straight line but I couldn't hear a thing in Charleston. My heartfelt "thanks" to him for running the net and the attempt to work stations from his QTH.

I contacted John W8GDP (two miles from me) on net frequency. We shifted downward for a short QSO.

As an example of the long distance conditions on 40 meters last night, I worked stations in Puerto Rico, Cuba, The Netherlands, and the Bahamas around sunset. After the net I had a short QSO with a ham in San Diego. Band conditions are

truly puzzling to say the least.

John N8ZYA

2-22-2017 QNI (3) N8ZYA NCS W8GDP AC8LJ

3-1-17 QNI (2) NCS N8ZYA W8GDP

Soapbox comments:

Big storm today in WV with 50 mph gusts and heavy rain. John W8GDP and I had a long talk about in on the net this evening.

=====

NAQCC Pacific Northwest QRS 80 Meter Net (PNW80)

Thursday evenings 5:00 PM PST, which is Friday 0100 UTC on 3574 kHz.

Main NCS - Stewart KE7LKW (Washington State)

02-03-2017 QNI (8) KE7LKW NCS, KG7JEB, W7ANM, AD7BP, WB4SPB, NB7M, WO6M, AK7R

02-10-2017 QNI (3) KE7LKW NCS, KG7JEB, W7ANM.

02-17-2017 QNI (6) KE7LKW NCS, NB7M, KG7JEB, WB4SPB, W7ANM, K7JUV.

02-24-2017 QNI (5) KE7LKW/7 NCS, NB7M, KG7JEB, WB4SPB, AD7BP.

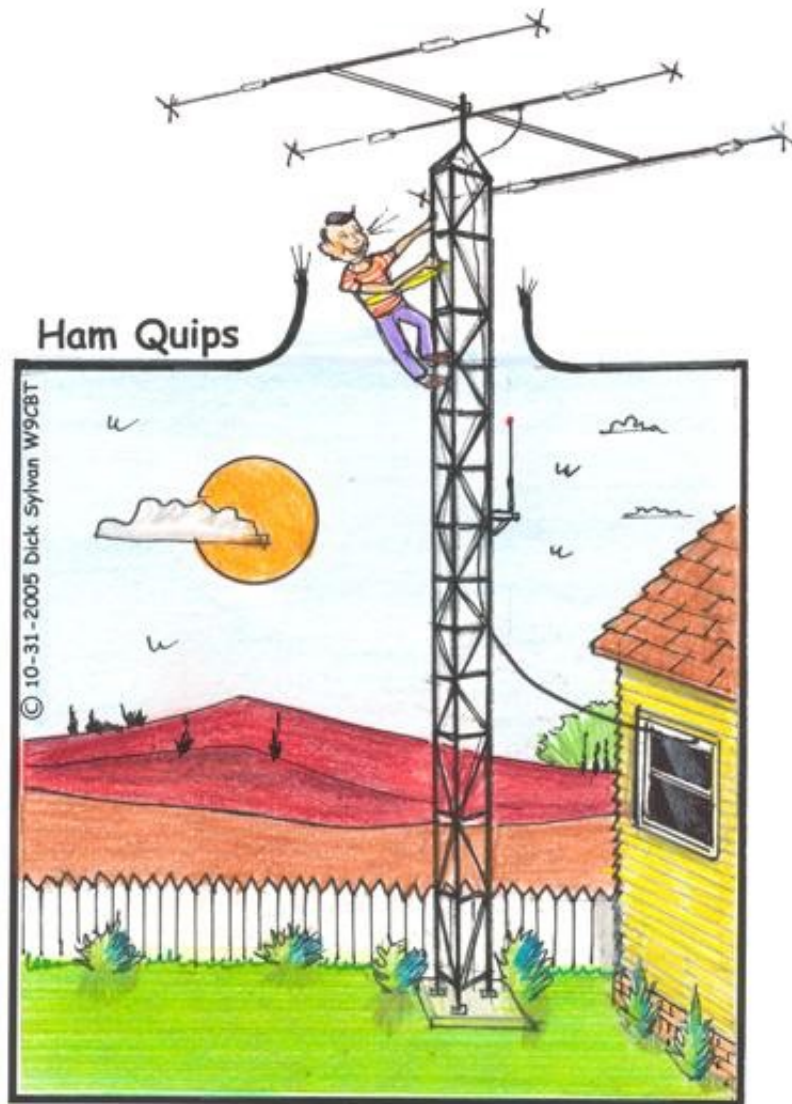
03-03-2017 QNI (5) KE7LKW NCS, NB7M, W7ANM, WB4SPB, K7JUV



HAM QUIPS



Dick Sylvan, W9CBT, #2062, has been a QRP/CW operator for a long time. He is also a very accomplished ham radio cartoonist and his work has appeared previously in the K9YA Telegraph newsletter. His book "HI HI - A Collection of Ham Radio Cartoons" is available at www.lulu.com.



"I Wish Dick Would Learn How To Draw Within The Cartoon Frame Because I'm Afraid To Climb Up This High Up On The Tower."



NAQCC CHAPTER NEWS

The North American QRP CW Club currently has eight local chapters - Europe, Western Pennsylvania, West Virginia, West Florida, Central Texas, Illowa, Delmarva, and Florida - but we would be more than happy to expand on that list. Chapters are more or less independent local gatherings organized by NAQCC members in a geographical area and subject to a list of guidelines from the NAQCC. They provide opportunities to have fun and to promote our parallel passions of QRP and CW. If you are interested in forming a local chapter please contact Club President Paul, N8XMS.

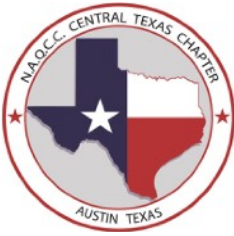
If your chapter is planning a portable operation activity and would like to have it promoted on the club email list or in the newsletter, send an email with the subject "NAQCC Portable Operation" and with the exact wording of the announcement to Vice President John, N8ZYA, at the email address listed on the last page about a week before the operation. Please be sure to include the UTC time for the event and not just the local time.

A report about your chapter activity should appear here. Please send them to KD2MX or N8XMS at the email addresses listed on the last page.

NAQCC chapters located in the United States are welcome to use the NAQCC Club call, N3AQC for their special operations. Please contact call sign trustee Paul, N8XMS, to schedule the use of N3AQC.

Chapter Reports Begin On The Next Page

CENTRAL TEXAS CHAPTER



Items in this section are from the Central Texas Chapter unless otherwise credited. Questions and comments should be directed to Danny, N5DRG.

The chapter is located in the Austin, TX area and maintains a website at <http://www.naqcc-centraltexas.net/index.html>.

Greetings from Texas,

Not too much has been going with the chapter here of late, we have not held any QRP in the Park Adventures since last December when the Chapter held its last NOPTA event at the El Comino Real de los Tejas.

One of our Chapter members John KN5L is moving to North Texas, he will be missed, John is a top notch CW operator, plus he always has new toys (Radio Gear) to try out.

Even though it's not actually related to the Chapters Group events it was made mention that we should include some of Danny's Ham Radio projects. Danny is updating his Towers & Antennas.

Danny, N5DRG has been slowly but steadily working on his radio stations exterior equipment, namely erecting two towers. Spaced about 150 feet apart.

He has the concrete pours for his dead men (Guying Cable supports), Erected two sections each on each tower for now until the Gin Pole becomes available, and the weather decides to cooperate then onward and upwards.

Danny's towers will be a 40 foot Rohn 25G with a Home Brew K4KIO Hex beam on it, and the other tower will be 60 feet of an Rohn 35G, with antennas for 6 meters 5 element Yagi, 2 meter FM, 15 element Yagi, and one for 2 Meter CW, 15 element Yagi, 432 Mhz. 13 Element Quagi, 220 Mhz. 8 element quad, and 10 meter vertical, plus wire antennas for 40 & 80 Meters, low end of the bands of course.

The Rohn Tower 35G or otherwise known as a Motorola Tower it has a 15" face, where the 25 G has a 12" face.

Pictures of Danny's antenna project can be seen of the following pages.



*Keep Calm
&
QRP On*



Rohn 25G attached to House via Home Brew House Bracket to tower



Rohn 35G & Conduits



Danny's son Connor KF5GFM running trencher



180 feet of Rock and Stone



Inside the Enclosure Panel Mounted at base of tower with Conduit Feeds for 7/8" Hard Line, LMR-400 runs, and Control Cables for Rotors, Antenna Switch relays, and Power over Ethernet, Mesh Nodes etc.



*Tower Dead Man Cable Support x's 3
3'6" x 3'6" x 3' with Sched 40 Pipe*



*Home Brew Tower Cap for Thrust Bearing
1/4" plate Steel with a 2" thrust Bearing*

DELMARVA CHAPTER



Items in this section are from the Delmarva Chapter unless otherwise credited. Questions and comments should be directed to Bill, N3IOD.

The chapter is located in the Delaware-Maryland-Virginia area.

Hello and good day to all!

This is Paul- ARS/NR3P and NAQCC #6448. (I had to look that number up, while I have my SKCC# 9987 memorized.... why?)

Looking up my NAQCC number, I realize that my address needs updating...have to remember to do that.

My XYL Keena and I (she hates the XYL acronym) have been toiling for months now in the too slow process of our moving from MD to DE. I've been in DE (Lewes – first town in first state) since May of last year. Keena still is in our Maryland house too much.

Since my move here to Delaware, my HF operating has been QRP CW with a Rockmite or an MTR-3B and LNR end-fed antenna in a low tree or on a Jacktite collapsible fiberglass mast. This, admittedly has been fun, yet slow, operating. My antenna had to be put up each time that I wanted to operate- this was not just go in the shack, sit down, throw a switch, tune up and go.

Not being on-the-air as much as I wanted to be, it was time for a more permanent antenna erection party!

In Lower Slower Delaware (LSD is the acronym) our local club repeater has occasional interesting traffic. A couple of weeks ago, I was listening to the planning of tree trimming and wire hanging at a fellow ham KB3MJ/ Denny's QTH. I joined in saying, "I could use help with that bucket truck!"

A plan was struck- day to be determined when wires could be hung.

It finally happened. This was the day! Four of us Delmarva Amateur Radio Funsters met at Denny's house on the last Thursday in February. It was a beautiful early spring day.

A newly minted ham, Mason /KC3GOP/ brought a bucket truck. And with him, Mason brought great skill in woodsman-ship, roof-climbing and wire-tying. We cheered Mason on while he cut branches and hung among the trees Denny's G5RV. Denny is now back on HF! Mason climbed on Denny's roof and put a new feed-line on Denny's Diamond VHF/UHF vertical antenna. KB3MJ-L is the Echolink on our repeater- (visit our net on Tuesday evening -8PM). This new VHF antenna connection will make his Echolink for us all the better.

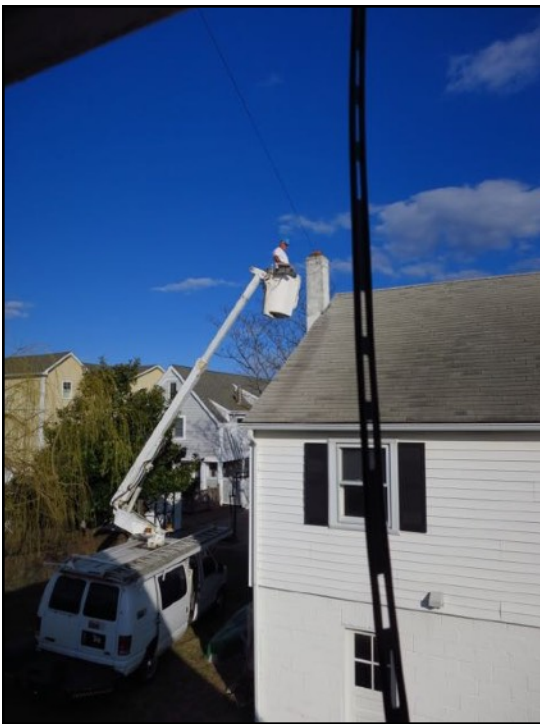
Later, mid-afternoon, it was on to my house. Living by the beach, we have no trees worthy of hanging wires. We did manage to hang, between chimneys on two different houses, a newly crafted (by W3GNO/ Ray and KB3MJ/ Denny) dipole from a DX-Engineering kit.

By this time, we all had run out of poop. We called it a day then and agreed to meet on the morrow at my house and put up a loop antenna between four chimneys on nearby houses. (Aren't I a lucky fellow?)

We met at my house next day at 1 pm. A weeping willow is between houses here and in the way of the wire for the loop antenna. It needed trimming. This took a bit of time, and like all of our work, this would have been difficult to impossible without Mason's bucket truck.

My plan was to make a loop of continuous 14 ga. stranded THHN wire from one connection of a balun, up through ladder-line feeder and around to four chimneys and back down though ladder-line feeder to the balun. This employed a ladder-line "Ladder Snap (tm)" kit from 73CNC.com. One continuous wire from the balun at ground level, up and around and back down, required assembly of feed-line from the loop aloft and down to the balun. This final loop ladder-line assembly couldn't have been done without the bucket truck.

Antenna findings report, both are up at about 30 feet- the loop is better than the dipole overall, but not really any quieter on receive. The dipole has a lower SWR on some frequencies than the loop antenna, but not on many. It is very nice to have HF antennas available for use where you live!



NAQCC EUROPEAN CHAPTER



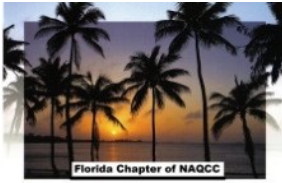
Items in this section are from European Chapter unless otherwise credited. Questions and comments should be directed to Matt, MW0MIE.

The European Chapter has its own monthly challenges to compensate for the Atlantic Ocean. However all are welcome to participate, not just members in EU, and we regularly receive challenge logs from North American participants. Please see the chapter website for dates and details at <http://www.naqcc-eu.org/>

So far, we've received three successful entries for our February alphabet challenge concerning European classical composers. Congratulations to EA1KC, K1IEE and PA9CW! There are still a few days left to submit your entries, do check your logs to see if you've already made all the QOSs required! See <http://naqcc-eu.org/eu-challenges/february-2017-challenge/> for full details.

The March challenge is now underway. The theme is inline with this year's International Women's Day on 8th March: our challenge is an alphabet challenge based on the names of five famous European woman through the ages. Do try to submit an entry if you can. The full details and rules are available on our website.

NAQCC FLORIDA CHAPTER



Items in this section are from the Florida Chapter unless otherwise credited. Questions and comments should go to Steve, WB4OMM.

The Florida Chapter website is <http://wb40mm.com/naqcc-fl-chapter>.



The Florida Chapter of NAQCC – February '17 Parkpedition

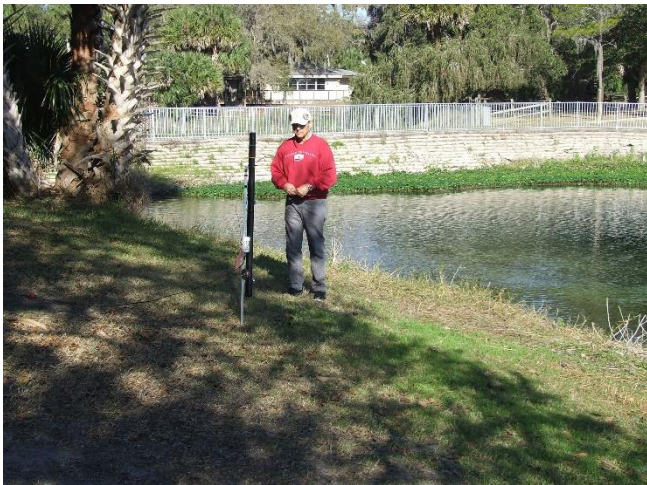
MEMBER NEWS: On Friday, February 17th, 2017 the Florida Chapter of NAQCC held its latest “Operation in the Park” event at Gemini Springs Park. The 210-acre Gemini Springs was purchased in 1994 through the combined efforts of Volusia County, the Trust for Public Lands, the St. Johns River Water Management District and the Florida Communities Trust. Approximately 6.5 million gallons of sparkling fresh water bubble up from the two springs each day.

Gemini Springs is between the town of Enterprise, which was a busy center of commerce and government in the early days of the Florida frontier, and the city of DeBary. The land passed through several hands before it was purchased by its last private owners, Sandra and Charles Gray, in 1969. Farming operations at Gemini Springs in the 1800s included timber, citrus and tapping longleaf pine trees for turpentine. John H. Padgett, who bought the land around the turn of the century, is believed to have built the two-story farmhouse and barn we see today. The Padgett family raised cattle and grew sugar cane, operating a cane press and selling sugar juice to passengers on the trains as they passed by on the railroad to Enterprise.

The Gray family gave Gemini Springs its name and raised prize-winning Santa Gertrudis cattle on the property. Under their ownership, the earthen dam and reservoir were built, along with the arched bridges, the stone barbeque building and the Spring House.

This park has a nice covered pavilion, a very short walk to parking, a restroom and several large picnic tables (many near the water), making for easy setup. We’ve been to this park a few times and it is another of our favorites. We arrived, to a temp of 62 degrees and 50% humidity, accompanied by crystal clear blue skies and a light breeze. Florida Winter at its best. When we left, it was a balmy 73 degrees! A Chamber of Commerce Day to be sure!!

Don K3RLL #1905 used his trusty KX-3 on 30M to a 31' vertical wire supported by a Jackite Pole in the sand a few feet from the water. He made 5 contacts with NAQCC members: KC9TYA #8671 (IN); KD3CA #6602 (PA); KD9HV #327 (IN); WI5H #7128 (TX); and WA8SAN #792 (OH). Don also worked WG8Y #4405 (NC) using his 1Watter running 900mW (YES! Less than a watt) and Art's Mag loop.



Don K3RLL setting up his vertical — a nice shot of his QRPp 1 Water radio!! 900 mW!! Wow!



Calculated – that's 470 miles in distance, or 522 miles per watt! A home built radio, a small battery, and a Homemade portable antenna.....that's QRP CW in the field at it's absolute best!

Something else – I think he used a secret weapon!! Here's his radio and antenna....and look closely in the water! Fish!!! And lots and lots of them!! We think he cajoled those denizens of the not so deep to hang out and serve as his antenna ground plane! We all knew there was something fishy going on..... Don said the fish hovered there all morning!





Bob W2EJG, Steve WB4OMM, and Nicole KM4SBQ

Steve WB4OMM #5913 and Bob W2ELG ran Steve's station on 40M along with Nicole KM3SBQ #8749 using a KX-3 running 5W out. Bob and Steve almost both bombed today – Bob made one QSO with a fella in GA, and Steve made one QSO with a fella in MI – no NAQCC members..... QSB was deep on 40M!! Antenna was a homebrew End Fed Wire – 53 feet long to a 9:1 balun up in a tree. And for the first time, we used Bandpass filters!



Art WB4MNK pounds out the CQ-NA signals!

Art WB4MNK # 5274 made 2 QSOs on 20M – NN9K #6887 (IL) and N9EP #8837 (also IL). His KX1 pumped 4W to a homemade Magnetic Loop Antenna.

Art also had a Bandpass filter. Both units are homebrewed – Art's is in an Altoids box for QRP; Steve's in a Hammond box for up to 200W.

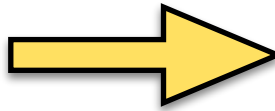
Watch for more on these excellent bandpass filter accessories in the near future!



Wally KG4LAL #6278 with a Sierra Wilderness rig with 3 watts out to a wire antenna. If you have a good memory, last time we were here a year ago, Wally used his aluminum canoe for an antenna! (See our February 2016 report). Sorry to say...but no Qs this time. He said he shoulda have used the canoe again! But that's OK, he has fun...like we all do, and

we're happy he's with us! He is dedicated!

So this month.....no wildlife surprises for Wally...or anyone else! BUT FAIR WARNING...this sign was at the park pavilion.



Yes, we live in Florida.



We had kind of a "special guest" at today's outing – Darrell Davis KT4WX from the Lake Wales area – about 110 miles SW of us! Darrell is the ARRL West Central Florida Section Manager and has a portable group in Lake Wales – if you didn't know, Steve WB4OMM is the ARRL Northern Florida Section Manager! Darrell brought his Go Kit that contained a KX-3, Auto Tuner, Battery and other goodies. He stayed for lunch – and made us nuts – he fried up sausage on a small portable gas grill while the rest of us ate cold sandwiches! It just ain't right!!!



More photos of this magnificent park.





Lunch time!! From left front to back to right front - Wally KG4LAL, Steve WB4OMM, Bob W2EJG, and Don K3RLL – KT4WX in the background (Art WB4MNK & John KD4JS were at the other table)

We quit around noon and enjoyed our “brown bag picnic” lunch in the pavilion....except for Darrell cooking his wonderful sausages! It was a glorious day in a magnificent park, with wonderful people and the greatest hobby in the world – Ham Radio!!

Many thanks to those who listened for us and helped make this yet another successful NAQCC-FL event! We appreciate those to look for us to contact!!

NEXT MONTH: The next monthly outing of the NAQCC-FL Chapter is scheduled for Friday, March 24th, 2017 at 9:30 am.

Check us out at: <https://wb4omm.com/naqcc-fl-chapter/>

72/73 to all, Steve, WB4OMM #5913, NAQCCFL@yahoo.com

NAQCC ILLOWA CHAPTER



Items in this section are from the Illowa Chapter unless otherwise credited. Questions and comments should go to Mark, K0NIA.

The Illowa Chapter operates in the “Quad Cities” area of Davenport, IA / Moline, IL.

February 2017

Pete, NN9K has turned over the Illowa chapter liaison position to Mark Vincent, K0NIA. As perhaps many of you probably already know, Pete has been instrumental in developing interest and activity in QRP and CW in the Illowa area. He has personally mentored many of us, spending countless hours helping us get on the air, build and acquire necessary equipment, work on operating skills, and patiently giving advice over a friendly cup of coffee. It would be hard to overstate how much Pete has done for CW and QRP activity, and we are all grateful. His generosity and dedication to ham radio and NAQCC are second to none. Thanks Pete!

As for our activity in the last month or so... We had a chapter meeting **on February 9th** at the Bettendorf Village Inn with Dave, KD9VT, Tony, N9YPN, Bob, W9PZ, Mark, K0NIA and Peter, NN9K attending.

Several members of the group have been building EARCHI antennas, largely due to the encouragement and research provided by Dave, KD9VT. We have modified the EARCHI plans somewhat, extending the antennas to 80m. We continued discussion of those efforts.

Two completed Sea Sprite kits were also brought and examined by all. Several of the members have started assembling their kit but family activities have taken time away from kit building.

After a short discussion about poor band conditions and agreeing that we needed to do more portable operations the discussion turned to computer security and the need to keep operating systems and virus/malware programs updated.

Later in the month, on several occasions our area experienced record high temperatures, like much of the country. So we have taken the opportunity to get out and do some portable QRP/CW work in local parks. Pictured here are Dave, KD9VT and Pete, NN9K working the bands on a beautiful February day.



NAQCC WEST FLORIDA CHAPTER



Items in this section are from the West Florida Chapter unless otherwise credited. Questions and comments should go to Ron, N9EE.

The chapter's web site is at <https://www.facebook.com/groups/967110089994401/>.

NAQCC-WFL at Brooksville HamFest, Feb 18, 2017

The West Florida chapter set up at the Brooksville HamFest, Feb. 18th. Had most enjoyable time. No QSOs, but promoted NAQCC. Had lots of interest in QRP.



Ron, N9EE mining NAQCC-WFL rig at Brooksville HamFest



Ron, W4REM trying some CW



20m HamStick Dipole setting on the porch

NAQCC-WFL at Anciotte Gulf Park, Holiday, Florida, Feb 25, 2017

ATTENDING:

Ron, N9EE FT817 NAQCC nr 6145
 Biran, AJ4RI
 Connie, KC3EFZ
 Dave, Connie's friend
 Don, KA2KAP

Arrived at the park at 0910 hr, at first on the way seems was going to be bad weather, but cleared, Sun came out and was very nice on the water. Park was having a Fishing Tournament, but we found nice shelter for our event.

Biran, AJ4RI, was new to the area and wanted to meet some local Hams and see what was happening with QRP. He owns a FT817 and maybe can attend with it at a later event.

Log:

CALL	TIME(ET)	MY/HIS	FREQ
W9MM	1030	599/599	14.053
WA2JSG	1039	239/589	14.060 <i>NAQCC member nr 3457</i>
YU1OGA	1051	599/599	14.021
KM5PS	1110	599/599	14.014
N2UA	1124	599/599	14.048
AA3B	1126	599/599	14.047
OP1A	1132	249/599	14.040



Park Setup



Ron, N9EE at the key



20m HamStick Dipole

NAQCC WEST VIRGINIA CHAPTER



Items in this section are from the West Virginia Chapter unless otherwise credited. Questions and comments should go to John, N8ZYA.

The chapter's web site is at <http://n8zyaradioblog.blogspot.com/>.

No report available.

NAQCC WESTERN PENNSYLVANIA CHAPTER



Items in this section are from the Western Pennsylvania Chapter unless otherwise credited. Questions and comments should go to John, K3WWP.

Activity picked up a bit in February for the WPA Chapter, and we're looking forward to increased activity in the coming months. We started a small email list to notify chapter members of upcoming activities. If you live in WPA which is the area highlighted in blue on the logo here in the WPA Chapter News section, and would like to join us in our activities, email K3WWP at the address shown at the bottom of the Contact Us page, and we'll add you to the email list. Currently we have on the list K3WWP KC2EGL K3RLL WB3FAE AB3RU N3CU KC3DOF K3JZD plus W3FFZ KC3RN both of whom we added at the South Hills hamfest.

Here is the latest revised activity schedule listing those activities we are sure of right now. There will also be other activities for which we can't plan that far in advance since most of our members are still in the work force, have family obligations, etc. In fact because of that, we modified our schedule listed here to avoid conflicts with Easter and Mother's Day.

February 26 - South Hills Hamfest by WASH

April 9 - Requin subpedition

May 21 - Parkpedition to Kittanning Community Park

June 4 - Butler Hamfest - hope to set up a NAQCC table as we've done the past several years now.

June 24/25 - Field Day - looking for a site since our previous site(s) no longer available

July 30 - FOBB from Kittanning Community Park

August - Skeeter Hunt (probably the 20th - date not officially announced yet) from Kittanning Community Park

August 27 - Skyview Swap N Shop near New Kensington - doing a QRP/CW presentation

September - Unionville (near Butler) hamfest by BCARA (probably the 10th)

Oct 9 - N3A Parkpedition to Kittanning Community Park

Nov 22 - Requin subpedition

Oil Creek and Titusville Railroad Train Ride(s) - Non-ham event, dates to be decided, probably in July and/or December

Mike KC2EGL and I first got together on President's Day as we do each year. After chatting and getting caught up on things, it was off to the shack. Mike worked EI11WAW on a single call, and I followed with the same result since EI11 was a new prefix for me. Then Mike got C6AKQ, again with but a single call. I had worked Bob many times before so I passed on him.

Next it was off to engage in our second favorite activity - eating. We did that at Applebee's in the Pittsburgh Mills where we both had fish and chips although I got my favorite onion rings instead of chips. Over to Best Buy to ostensibly just look around. However I wound up buying a new computer keyboard since they were listed as only 6 bucks and mine was showing its age. I also got some ink for my new printer and a 128 GB Flash drive for some backup work. Mike also got the same keyboard and a track ball mouse.

Back home again and Mike filled out the time with a computer hidden object game before heading home. Also during the day sometime we did some work on the above activity schedule, and especially made plans for the South Hills hamfest.

Mike picked up some kielbasa loaf and pierogies on a trip to Kowalonek's Kielbasa Shop in Shenandoah PA and brought me some on Thursday the 23rd. We spent an hour or so planning some more chapter activities. We also reminisced about the activities we have engaged in with the chapter and also before that when we became acquainted in the early 2000s.

On Sunday the 26th, Mike arrived here around 8AM and we headed south to the South Hills hamfest. We only made one wrong turn which was quickly rectified. We arrived there a little after 9AM and started looking for chapter members. Just as we checked in at the sign in table, Kevin KC3RN came up to us and chatted for a while. Later he said he was interested in our chapter activities and joined us. Bob KC3DOF was the next one we found. We found Art WA3BKD from the Requin submarine, and confirmed a date of April 9 for our first subpedition of the year. While we were talking with Art, Drew W3FFZ found us and told us that Jon AB3RU had to work and couldn't make the hamfest. The ubiquitous Bob WC3O was at a table right behind us. Jody K3JZD next came up to our little group. Tom WB3FAE showed up a little later. So we had a nice gathering of chapter members. Mike and Drew bought antennas from Art. Other members bought some other items. John K3WWP didn't have to buy anything since he was the winner of one of the door prize grab bags. In the bag was a MFJ 24 hour clock, 2017 WASH pocket organizer containing a lot of good useful info, a Yaesu mouse pad, MFJ catalog, and a Vectronics aircraft receiver kit that covers 118-136 MHz. Next on the agenda was a picture taking session with the results shown here:



*That's L-R across the combined picture: KC3DOF WB3FAE K3WWP
KC2EGL WC3O K3JZD and W3FFZ.*

On the way home from the hamfest we stopped at Walmart to check into a canopy to be used at various WPA Chapter activities. In addition to the hamfest Mike and I also spent time here checking the bands which didn't have much to offer. So we did some things on the computer watching some racing videos, playing games, and so forth before he had to head home. It's nice when folks have a lot of things in common rather than just ham radio or some other single interest.

MEMBER SUBMISSIONS



This section is a forum for you to tell other members what you've been up to on the ham bands or to submit a short article dealing with some aspects of CW and QRP operation or equipment. Just about anything that would be of interest to our members would be welcomed. Send your items to our News Editor Paul, KD2MX.

DISCLAIMER: Any views expressed in this section are those of the submitting member and may or may not be those of the NAQCC or its officers.

From Gene, N5GW, #5353 —

I' don't think that I would ever do this but it did make me smile. - Editor

Here is one you may be able to use. It's a form I send out to ops who don't answer my request for a QSL card:

Dear Fellow Ham: I recently sent you a QSL card but have not heard from you. Therefore please circle the appropriate excuse(s):

- 1) My German Shepard bit the postman and I haven't received any QSL cards since.
- 2) If I lick stamps, my tongue breaks out.
- 3) I wasted all my money on food, clothing and rent and have none left for ham radio.
- 4) Your card was ugly so I am not sending you one of mine.
- 5) Just who do you think I am anyway?
- 6) I am a conservationist and more paper means more trees cut down.
- 7) I can neither read nor write.
- 8) I have been meaning to buy a mailbox.
- 9) My pen ran out of ink and I can't find the other one.
- 10) The nearest post office is over two blocks away
- 11) My eyesight ain't what it used to be -- why does everyone write so small nowadays?
- 12) I can't tell you how sorry I am -- not that I'm a sorry person, just sorry.
- 13) Wishful thinking on your part.
- 14) Other _____
- 15) None of the above.

All excuses are acceptable except #15. In any event, please try harder to QSL -- it will make my day brighter!

72, Gene, N5GW

From Ron, N9EE, #6145 —

This info on the FT817 famous QRP rig might be interesting for the NAQCC newsletter. I have no way of verifying, but would not be surprised it is true.

Some interesting info on the FT817. I bought in early 2000s.

FT817s sold
Something near a quarter-million radios, +/- a bit.

HISTORY.

FT-817 was first sold in 2000.

Yaesu builds the FT-817 in lots, about 800 units per lot.

Lots 1 and 2 were sold only in Japan. From lot #3, about 80 units were sent to the USA for sale, and were sold a little before Thanksgiving 2000.

One of the first radios sold went to W4WB. This radio has had every W4RT mod tested on it before anything was sold. As of Jan 2014 that radio is still going.

Yaesu originally hoped to sell about 5000 units in the first 3 to 5 years. Currently, the FT-817 has been in production for 14 years, and as lot # 300 approaches, they are nearing a QUARTER-MILLION FT-817s sold! That is 250,000 radios sold. I don't believe there has ever been another radio so popular.

FT-817 Serial Number 8J450506 = 2008 August, Lot 145, SN 0506

Yaesu uses the same serial number scheme for all of their ham gear. The serial number has the form YMLLNNNN where Y = the last digit of the year of manufacture, M is a letter representing the month of manufacture with "C" = January, "D" = February, and so on, the lot number is represented by the two digit LL (00 - 99), and NNNN (0001-9999) is the unit number within lot LL. As an example, 0L030145 means October 2000, lot 3, unit 145. The lot number is not linked to the year & month, i.e., LL does not reset to 00 each year. Service bulletins refer to lot numbers.

There you go. Perhaps someone who just got a radio can send us the serial number, and we can make a guess at it.

73, ron, n9ee/r a know code Extra

From Curt, WA2JSG, #3457 —

N8FQ has been good enough to set up a tab for NAQCC on his schedule page where members can look for scheds with other members if interested. His address is <http://n8fq.org/sked/index.php?board=nrru>. Just sign in and register, then you will see the NAQCC tab to click on. Free, no charge.

From Paul, N8XMS, #0675 —

This is a followup to my soapbox comments about the February QRPp challenge. (<http://www.naqcc.info/challenges/challenges201702.html>) The challenge was to make at least 15 QRPp QSOs, including at least 2 DX entities. I completed the challenge by the 13th of the month with 15 QSOs and 6 DX entities running between 500 and 900 mW to my old Cushcraft R7 trap vertical.

I had so much fun with the challenge that I decided to keep my power turned down for the rest of the month to see just exactly what could be done with “flea power” during generally poor band conditions. The results were amazing!

I enjoyed solid QSOs all the way down to 100 mW, which is the lowest that my Elecraft K2 can go. Many of these contacts were actual rag-chews lasting several minutes with honest 549 and better signal reports.

The ARRL DX contest provided some very special opportunities. I didn't really work the contest but I did tune around a couple of different times during it looking for stations to work and ended up making 13 DX QSOs. Most of them were at 200 mW and all but one of them resulted in a 5-digit miles/watt calculation. The two contacts that I was most excited about making were working D4C on Cape Verde Island with 200 mW on 20-meters, and working VK2DX in Australia with 500 mW on 40-meters. These worked out to 19,190 mi/watt and 18,904 mi/watt respectively. The credit for contacts like these really goes to the person on the other end. Some of those DX contest stations have some amazing “ears!”

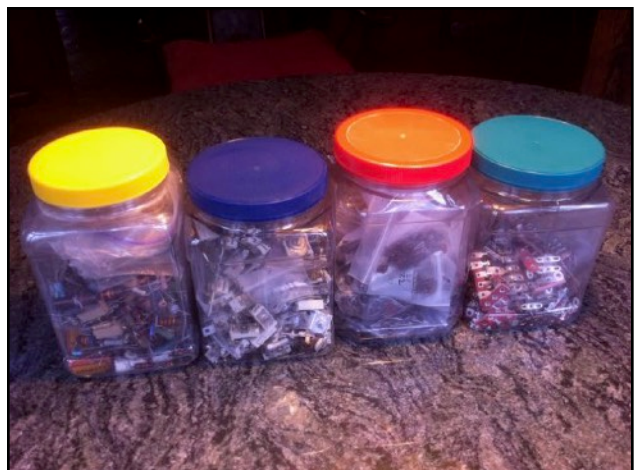
I consider myself to be a fairly seasoned (translated “old”) QRPper but results like these still thrill me almost as much as my earliest Novice QSOs back in the day. The fun just keeps rolling in with CW QRP and QRPp!

From Gene, N5GW, #5353 —

If you are a hoarder, ...errr... collector, of radio parts, you are probably always looking for good containers. I have had success using the large-mouth, clear plastic jars that contain nuts or other foods as found in local grocery stores. Their advantages include the fact that contents are visible, they are fairly large yet easy to handle, the wide mouth allows reaching inside, they are durable and protected from moisture, and they are basically free.

The photo shows four such jars which measure about seven inches tall and four or five inches wide. From left to right they contain assorted resistors, mica compression trimmers, silver micas, and solder lugs.

An empty container is prepared by first filling it with hot water from the tap (not boiling hot) and allowing it to sit for a few minutes. This allows the label to be gently peeled off most of the containers. A sticky residue remains but this can usually be removed using vegetable oil or WD-40 and a paper towel. Occasionally it is necessary to use acetone or fingernail polish remover.



Start your collection today!

From John, K3WWP, #0002 —

February started off with some embarrassment for me. I had said in a few places that I thought the February QRPp challenge would be tough with the declining sunspots and poor propagation. Wrong! I finished it easily by the evening of February 8th and could have finished sooner had I not had a lot of other non-ham things on my docket.

Here are the 15 stations I worked for the challenge - P40LE* WA2DRG VO2NS* KP4JRS* W5CBT* KP2M* K1ARR PV8ADI* N4KS/MM* P49X* N9PR CO8LY* PJ2/KB7Q* C6ARU VE2MF.

Those marked with an asterisk qualify as 1,000 MPW QSOs. I'm not sure about C6ARU as he is almost exactly 1,000 miles according to QRZ. I'll have to do some further checking. I found some new QRPp band countries among the 15 - PV8ADI 40, KP2M 40, PJ2/KB7Q 30.

I had a great sprint in February with 52 QSOs from 27 SPCs. While the QSOs were 5 short of tying my record, the 27 SPCs was a record, breaking 25 previously. 50 of the 52 QSOs came on 80 meters, and 2 on 40 meters.

The DX streak continued through the month, and when I worked PJ7AA on 30M on the 28th, that completed 4 full years or 1,461 straight days of DX. It has proved to be a real adventure and a joy. More than anything else, I'm glad it has proved to many hams that you don't need an elaborate high power, big antenna, great location setup to work DX. I have no intention of intentionally ending it. As long as there is some DX available and I can work it, I'll carry on. I'll add a sentence to this telling whether I made it through February. I have a detailed report on the streak on my web site at k3wwp.com.

I also received, signed, and returned a release form for my QST article so it looks like it will definitely be published although in which issue still has to be decided.

As always for more news about my ham radio activities as well as comments on other subjects such as our record breaking February weather, you can read my web site diary at k3wwp.com. If you do, leave a comment in my new guestbook I started in February.

From Ed, PY4WAS, #2364 —

To

NORTH AMERICAN QRP CW CLUB !

CQMM DX CONTEST

www.cwjf.com.br



Organizer and Coordinator:
(CWJF Group - PY4KL)

Start: 12:00 UTC - Saturday
End: 23:59 UTC - Sunday

2017 : April, 15 / 16

Your participation is very important to the success of the contest

Less than 50 days to start of contest.

Leave this date on your notes.

QRP - STATION





Attention:

- Stations "QRP" must send the RST plus the Continent and plus the letter Q.
- Example: 599 / NA / Q
- QSO confirmed with QRP station, worth 10 points.

Disclose the CQMM DX CONTEST on your Club / Group

Help us promote the CQMM DX CONTEST / 2017 among the radioamateurs, clubs and groups in your country.

73, Ed - PY4WAS

CWJF Group , President
(NAQCC Member N° 2364)



NAQCC CLUB INFORMATION

STATEMENT OF PURPOSE

From NAQCC President Paul Huff, N8XMS

Amateur radio has something for everyone. SSB, FM, AM, the digital modes, and QRO power levels all have their place in this great hobby and we certainly recognize the importance of these modes as well as the enjoyment that they give to many. But for a growing number of hams the challenge of *“doing the most with the least”* makes QRP (and QRPp) CW operating the greatest thrill available in amateur radio, and the North American QRP CW Club exists to promote this exciting facet of the hobby. As part of our focus we also encourage, but do not limit operators to, the use of simple wire antennas.

The NAQCC provides numerous opportunities for hams to enjoy QRP/CW operating. For contester types we have a popular monthly 2-hour sprint that runs at relatively low CW speeds and at a fairly relaxed pace. Three special sprints also take place during the year for 160-meter and QRPp operators. For a month-long activity we offer our members a Monthly Challenge that can be anything from forming a list of words from the calls of stations worked, to making a prescribed number of contacts using home-brew gear. There is also an extensive awards program to recognize the significant QRP/CW accomplishments of our members.

We also serve as a resource for people who are just getting started in QRP and/or CW. Our slow-speed CW nets are a great place for beginners to practice Morse code under real on-air conditions. Beginners will also find a wealth of helpful information on our club website and we are more than willing to try to answer any questions about QRP and CW that you might have. An extensive monthly newsletter is filled with useful projects and news from fellow QRPers.

A number of local NAQCC Chapters offer opportunities to get together for in person socializing and QRP/CW activities. Portable operations are especially popular with the local chapters.

Whether you are a veteran ham radio operator who is looking for a new challenge in the hobby, or a beginner who is intrigued by the possibilities of QRP/CW communication, we cordially invite you to join us. Membership is free and the benefits and fun are significant.

The North American QRP CW Club was founded in 2004 by WY3H and K3WWP and now has over 8000 members world wide. Membership is free and anyone interested in CW/QRP operating is welcome. Complete information about the NAQCC, including a membership application, activities schedule, and useful resources, can be found on our website at <http://www.naqcc.info/>. Inquires can also be sent to

Club President Paul Huff, N8XMS
9928 Eckles
Livonia, MI 48150
USA



Additional contact information can be found on the next page.

NAQCC CONTACTS		
NAQCC President Newsletter Editor	Paul - N8XMS	paul142857@gmail.com
NAQCC Vice President West Virginia Chapter	John - N8ZYA	jspiker58@gmail.com
Delmarva Chapter	Bill - N3IOD	william.hammond@mchsi.com
European Chapter	Matt - MW0MIE	matt@naqcc-eu.org
Florida Chapter	Steve - WB4OMM	wb4omm@arrl.org
Western Pennsylvania Chapter	John - K3WWP	naqcc33@windstream.net
Central Texas Chapter	Danny - N5DRG	n5drg@naqcc-centraltexas.net
Illowa Chapter	Mark - K0NIA	iowamv@gmail.com
West Florida Chapter	Ron - N9EE	mccrpt@tampabay.rr.com
Help For Beginners	Brion - VE3FUJ	ve3fuj@wightman.ca
Member Submissions Member Spotlight	Paul - KD2MX	kd2mx@arrl.net
NAQCC CW Nets	Wayne - NQ0RP	wayne.dillon@gmail.com

REPRINT POLICY

Unless otherwise stated in the article, local clubs and other ham radio organizations are free to reprint featured articles from this newsletter, provided appropriate credit is given to the North American QRP CW Club and the author of the article. If at all possible a link to the club website at <http://www.naqcc.info/> should be included.